

Arl1(Q71L) Mutant

Catalog Number: 10156

Synonyms: ADP-ribosylation factor-like 1, ARFL1

Background: Arl1 is a member of the Arf family of regulatory GTPases, within the Ras superfamily of GTPases (ARFs). ARFs, described as activators of cholera toxin (CT) ADP-ribosyltransferase activity, regulate intracellular vesicular membrane trafficking, and stimulate a phospholipase D (PLD) isoform.

Amino Acid Sequence: (1-181, Q71L)

MGGFFSSIFSSFLGTREMRILILGLDGAGKTTILY
RLQVGEVVTTIPTIGFNVETVITYKNLKFQVWDL
GGLTSIRPYWRCYYSNNTDAVIYVVDSCDRDRIG
ISKSELVAMLEEEELRKAILVVFANKQDMEQA
MTSSEMANSGLPALKDRKWQIFKTSATKGTG
LDEAMEWLVELKSRQ

Source: Human, recombinant full length, His₆-tag

Expression Host: E. coli

Molecular Weight: 20 kDa

Purity: >99% by SDS-PAGE

Constituents: 20 mM Tris-HCl, pH
8.0, 150 mM NaCl.

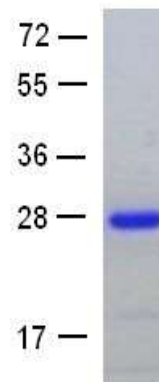
Physical Appearance: White or clear

Concentration: 1 mg/mL

Storage: -80°C

Preparation Instructions

Adding of 10 mM β -mercaptoethanol or 1 mM DTT into the solution to protect the protein is recommended and using of non-ionic detergents such as n-Dodecyl β -D-maltoside (DoDM) or polyethylene detergents (e.g. C12E10) also help to stabilize the protein. Avoid repeated freezing and thawing.



The purity of His-tagged Arl1 Q71L was determined by SDS-PAGE and Coomassie Brilliant Blue Staining.

References

1. Hong, J.-X. et al., J. Biol. Chem. 273:15872-15876, 1998.
2. Zhang, G.-F. et al., J. Biol. Chem. 270: 21-24, 1995.

FOR RESEARCH USE ONLY. NOT FOR DIAGNOSTIC APPLICATIONS